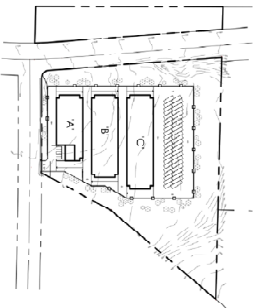


CASE: PAR220039
EXHIBIT: A Presentation
DATE: 07/07/2022
PLANNER: K. Mason

Meeting
 Comment Agenda
 Final

- LEGEND**
- █ PROPERTY LINES & EXISTING EXTERIOR FINISH COMMENTS
 - █ DRIVE - EXISTING EXTERIOR FINISH COMMENTS
 - █ DRIVE - IMPROVEMENTS, EXTERIOR FINISH COMMENTS
 - █ DRIVE - EXISTING EXTERIOR FINISH COMMENTS
 - █ DRIVE - IMPROVEMENTS, EXTERIOR FINISH COMMENTS
 - █ DRIVE - EXISTING EXTERIOR FINISH COMMENTS
 - █ DRIVE - IMPROVEMENTS, EXTERIOR FINISH COMMENTS
 - █ DRIVE - EXISTING EXTERIOR FINISH COMMENTS
 - █ DRIVE - IMPROVEMENTS, EXTERIOR FINISH COMMENTS
 - █ DRIVE - EXISTING EXTERIOR FINISH COMMENTS
 - █ DRIVE - IMPROVEMENTS, EXTERIOR FINISH COMMENTS
 - █ DRIVE - EXISTING EXTERIOR FINISH COMMENTS
 - █ DRIVE - IMPROVEMENTS, EXTERIOR FINISH COMMENTS
 - █ DRIVE - EXISTING EXTERIOR FINISH COMMENTS
 - █ DRIVE - IMPROVEMENTS, EXTERIOR FINISH COMMENTS



BUILDING AREAS

BLDG. A:	2 STORY	34,800 S.F.
BLDG. B:	2 STORY	49,600 S.F.
BLDG. C:	2 STORY	56,800 S.F.
SUBTOTAL:		141,200 S.F.
OFFICE:		1,800 S.F.
TOTAL:		143,000 S.F.

CIVIL ENGINEER
SEAN SAVAGE
OMEGA ENGINEERING CONSULTANTS, INC.
3340 DIERVOEGE AVENUE SUITE 5
SAN DIEGO, CA 92108
PHONE: 619-488-6985
EMAIL: sean@omega-consultants.com

ARCHITECT
ARIEL VALLI
VALLI ARCHITECTURAL GROUP
9240 NORTH ART WILKES WAY
VNS, UT 92728
PHONE: 949-318-4181
EMAIL: ariel@vallibk.com

REPRESENTATIVE
CSANG-FEHS
PREMIUM LAND DEVELOPMENT
108 CHANCE WAY, SUITE 5
SAN DIEGO, CA 92108
PHONE: 909-283-8588

CONSTRUCTION COORDINATOR
ROBERT STACIS
103 BALDWIN AVENUE, STE 102
222 S. CENTRAL AVENUE, STE 200
LAFAYETTE, CA 94501
PHONE: 925-281-8201
EMAIL: mrobert@bestboxorange.com

OWNER / DEVELOPER
MAT CASABLANCA
BESTBOX ORANGE
222 S. CENTRAL AVENUE, STE 200
LAFAYETTE, CA 94501
PHONE: 925-281-8201
EMAIL: mrobert@bestboxorange.com